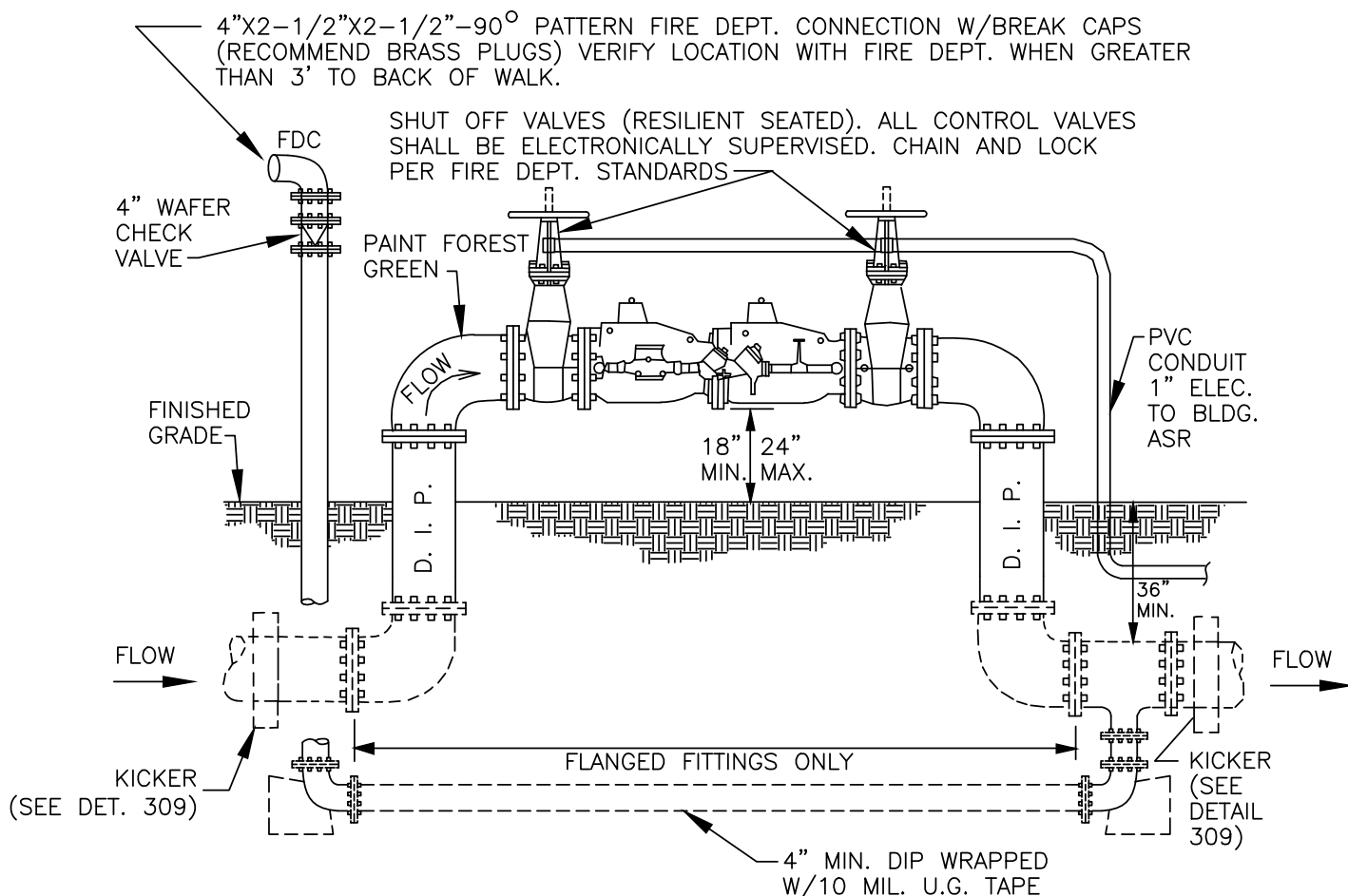


Appendix D

Standard Details (2024)



TYPICAL DOUBLE CHECK DETECTOR CHECK SIDE VIEW
TYPICAL REDUCED PRESSURE DETECTOR ASSEMBLY SIDE VIEW

NOTES:

1. ALL BACKFLOW PREVENTION ASSEMBLIES SHALL BE ON THE APPROVED LIST OF THE USCFCCHR.
2. ALL BACKFLOW PREVENTION ASSEMBLIES SHALL BE INSTALLED ABOVE FINISHED GRADE AT BACK OF PSE.
3. MAXIMUM DISTANCE BETWEEN FIRE DEPARTMENT CONNECTION (FDC) AND PUBLIC FIRE HYDRANT SHALL BE 50', UNLESS SPECIFICALLY APPROVED BY FIRE DEPT.
4. FDC TO REMAIN ACCESSIBLE AND FIRE APPARATUS ACCESS ROAD MARKED PER VEHICLE CODE.
5. DIP BELOW GROUND SHALL BE ENCASED IN POLYETHYLENE TUBING. SEE SPEC. 14-03B.
6. ALL CONNECTIONS TO BE FLANGED.
7. ALL TRIM HARDWARE TO BE BRASS OR BRONZE.
8. METER TO REGISTER IN GALLONS.
9. BY-PASS METER PIPING TO BE INSULATED AGAINST FREEZING.
10. MASTIC ALL BOLTS/NUTS OR USE STAINLESS STEEL COMPONENTS.
11. BACKFLOW PREVENTION ASSEMBLIES SHALL BE RETESTED AT THE TIME THE VALVE TO THE STREET IS OPENED.

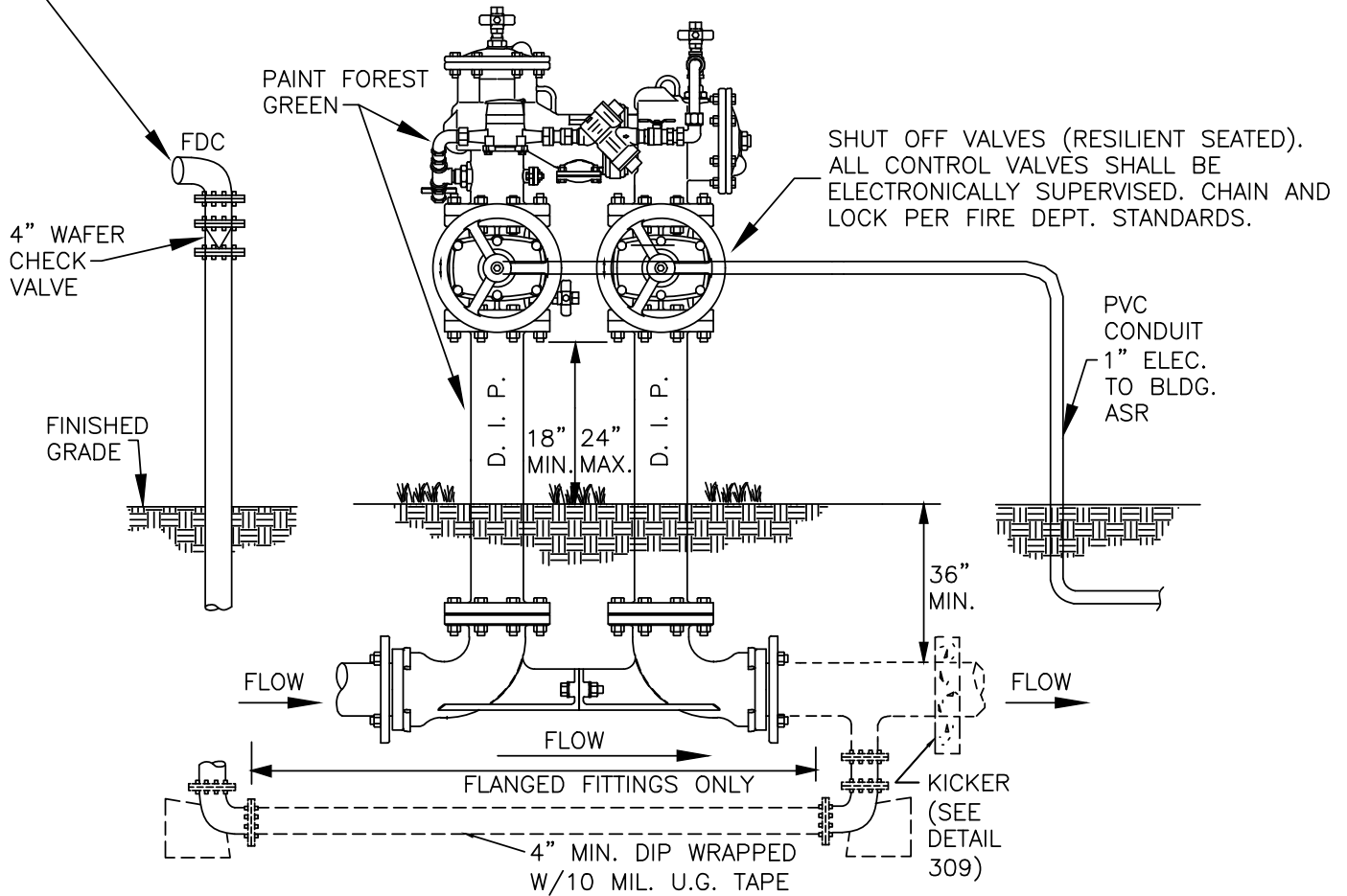
DRAWN BY: STAFF		
CHECKED BY: AN		
SCALE: N.T.S.		

CITY OF PLEASANTON
 STANDARD DETAILS
 BACK FLOW PREVENTION
 FIRE SERVICE CONNECTION TYPE 1
 TO SPRINKLERED BUILDINGS



DATE: 7/24 DWG NO. 704

4"X2-1/2"X2-1/2"-90 PATTERN FIRE DEPT. CONNECTION W/BREAK CAPS
(RECOMMEND BRASS PLUGS) VERIFY LOCATION WITH FIRE DEPT. WHEN GREATER
THAN 3' TO BACK OF WALK.



TYPICAL DOUBLE CHECK DETECTOR CHECK SIDE VIEW
TYPICAL REDUCED PRESSURE DETECTOR ASSEMBLY SIDE VIEW

NOTES:

1. ALL BACKFLOW PREVENTION ASSEMBLIES SHALL BE ON THE USC FCCCHR APPROVED LIST.
2. ALL BACKFLOW PREVENTION ASSEMBLIES SHALL BE INSTALLED ABOVE FINISHED GRADE AT BACK OF PSE.
3. MAXIMUM DISTANCE BETWEEN FIRE DEPARTMENT CONNECTION (FDC) AND PUBLIC FIRE HYDRANT SHALL BE 50', UNLESS SPECIFICALLY APPROVED BY FIRE DEPT.
4. FDC TO REMAIN ACCESSIBLE AND FIRE APPARATUS ACCESS ROAD MARKED PER VEHICLE CODE.
5. DIP BELOW GROUND SHALL BE ENCASED IN POLYETHYLENE TUBING. SEE SPEC. 14-03B.
6. ALL CONNECTIONS TO BE FLANGED.
7. ALL TRIM HARDWARE TO BE BRASS OR BRONZE.
8. METER TO REGISTER IN GALLONS.
9. BY-PASS METER PIPING TO BE INSULATED AGAINST FREEZING.
10. MASTIC ALL BOLTS/NUTS OR USE STAINLESS STEEL COMPONENTS.
11. BACKFLOW PREVENTION ASSEMBLIES SHALL BE RETESTED AT THE TIME THE VALVE TO THE STREET IS OPENED.

CITY OF PLEASANTON
STANDARD DETAILS

BACK FLOW PREVENTION
FIRE SERVICE CONNECTION TYPE 2
TO SPRINKLERED BUILDINGS



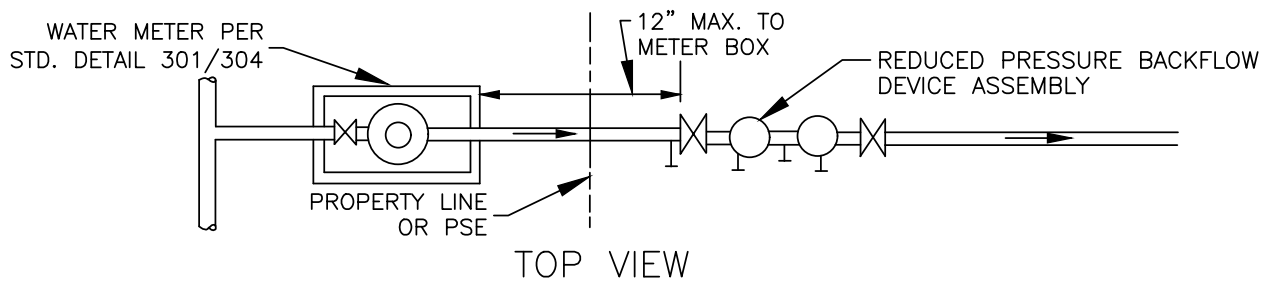
DRAWN BY: STAFF

CHECKED BY: AN

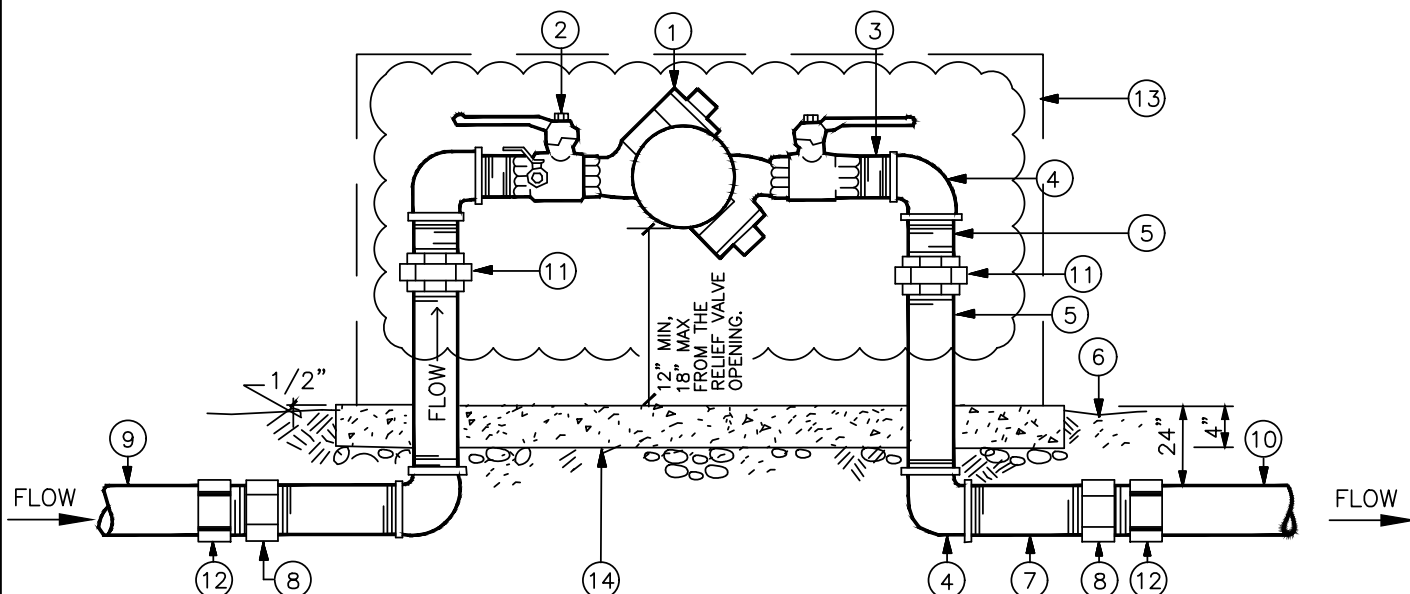
SCALE: N.T.S.

DATE: 7/24

DWG NO. 705



TOP VIEW



- ① REDUCED PRESSURE BACKFLOW PREVENTER DEVICE
- ② SHUTOFF VALVE, BALL TYPE
- ③ SHORT NIPPLE; RED BRASS
- ④ ELBOW; BRONZE
- ⑤ NIPPLE; LENGTH AS REQUIRED, RED BRASS
- ⑥ FINISH GRADE
- ⑦ SHORT NIPPLE; RED BRASS
- ⑧ COUPLING; RED BRASS

- ⑨ PRESSURE LINE FROM WATER METER
- ⑩ MAIN LINE; SIZE PER PLAN
- ⑪ UNION; BRONZE OR BRASS
- ⑫ SCH 80 PVC MALE ADAPTER (SXT)
- ⑬ PROVIDE INSULATED BAG INSIDE "STRONG BOX" (SEE NOTE 4)
- ⑭ CONCRETE PAD AS REQ'D FOR "STRONG BOX" (SEE NOTE 4)

NOTES:

1. ALL BACKFLOW PREVENTION ASSEMBLIES SHALL BE ON THE USC FCCCHR APPROVED LIST.
2. IF MAX. DISTANCE BETWEEN WATER METER BOX AND REDUCED PRESSURE PRINCIPAL ASSEMBLY EXCEEDS 12", A CONCRETE CAP SHALL BE PLACED OVER THE WATER LINE.
3. ALL PIPING SHALL CONFORM WITH THE LATEST EDITION OF THE UNIFORM PLUMBING CODE.
4. WEATHER PROTECTION DEVICES TO PROTECT PIPES FROM FREEZING SHALL REQUIRE APPROVAL BY THE PLANNING DIVISION PRIOR TO INSTALLATION. SUCH MATERIAL SHALL BE REPLACED AS THEY BECOME WORN OUT. CITY MAINTAINED SYSTEMS SHALL HAVE "STRONG BOX" AND INSULATED BAGS UNLESS NOTED OTHERWISE.
5. TYPE "L" COPPER CAN BE USED FOR ALL FITTINGS ONLY WITH THE APPROVAL OF THE ENGINEER.
6. FITTINGS SHALL HAVE CLASSIFICATION OF 125 LBS.

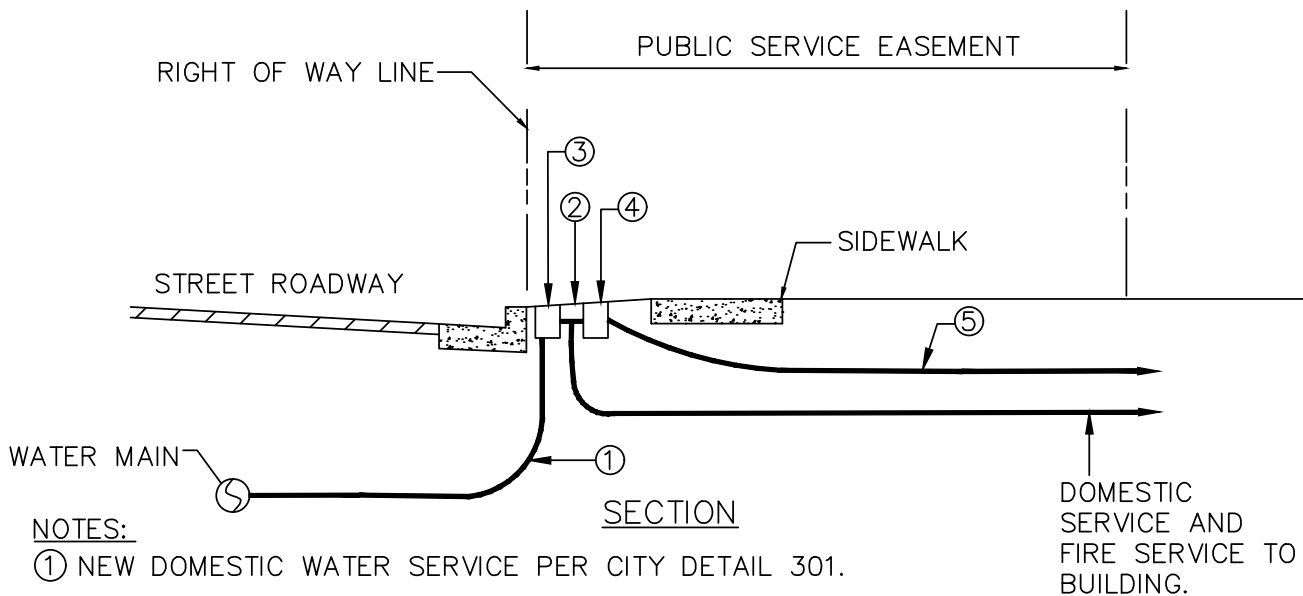
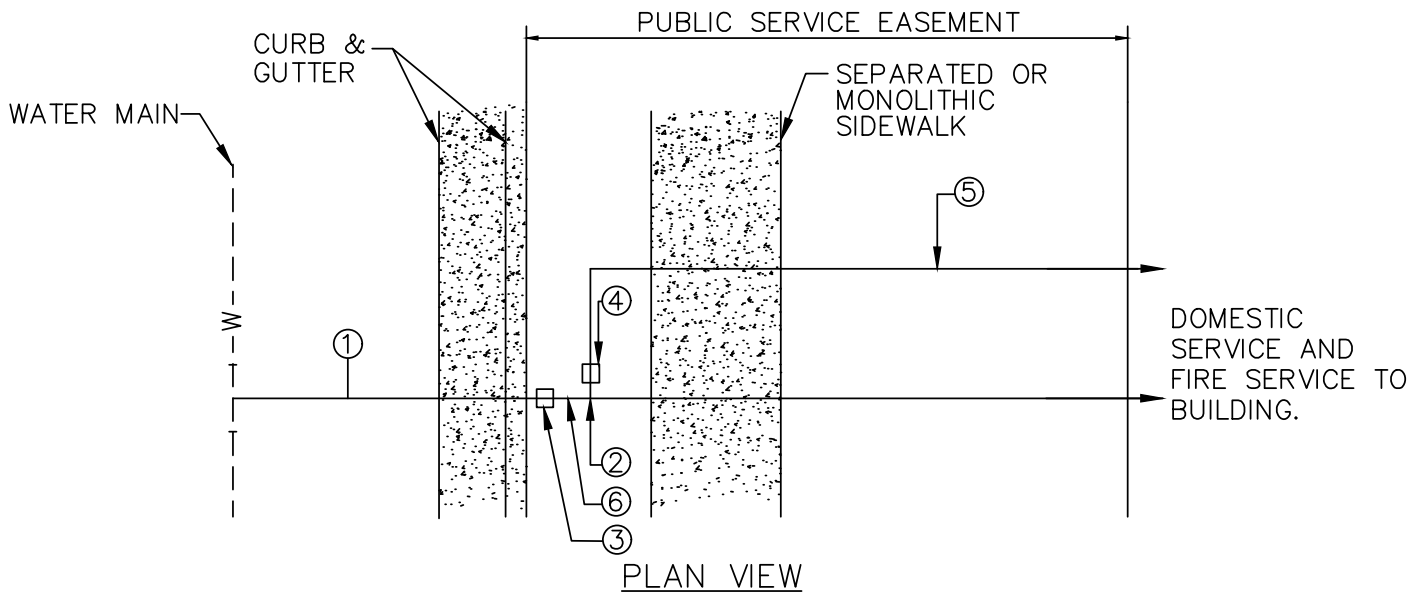
DRAWN BY: STAFF		
CHECKED BY: AN		
SCALE: N.T.S.		

CITY OF PLEASANTON
STANDARD DETAILS

BACKFLOW PREVENTER FOR
DOMESTIC OR IRRIGATION SERVICE



DATE : 7/24 DWG NO. 706



NOTES:

- ① NEW DOMESTIC WATER SERVICE PER CITY DETAIL 301.
- ② TAP DOMESTIC SERVICE LINE AND INSTALL IRRIGATION METER BOX FOR IRRIGATION SERVICE PER DETAIL 301.
- * ③ NEW DOMESTIC WATER METER PER DETAIL 301.
- * ④ IRRIGATION SUB METER. (OWNER/DEVELOPER PAYS FOR METER COST ONLY)
- ⑤ IRRIGATION SERVICE AS PER CITY BUILDING DEPARTMENT AND UPC REQUIREMENTS.
- * ⑥ PRESSURE REDUCER AND/OR REDUCED PRESSURE BACK FLOW DEVICE ON DOMESTIC AND IRRIGATION SERVICE IF REQUIRED.
- * METER BOXES AND PRESSURE REDUCER AND/OR REDUCED PRESSURE BACK FLOW DEVICE SHALL BE PLACED OUTSIDE OF SIDEWALK.

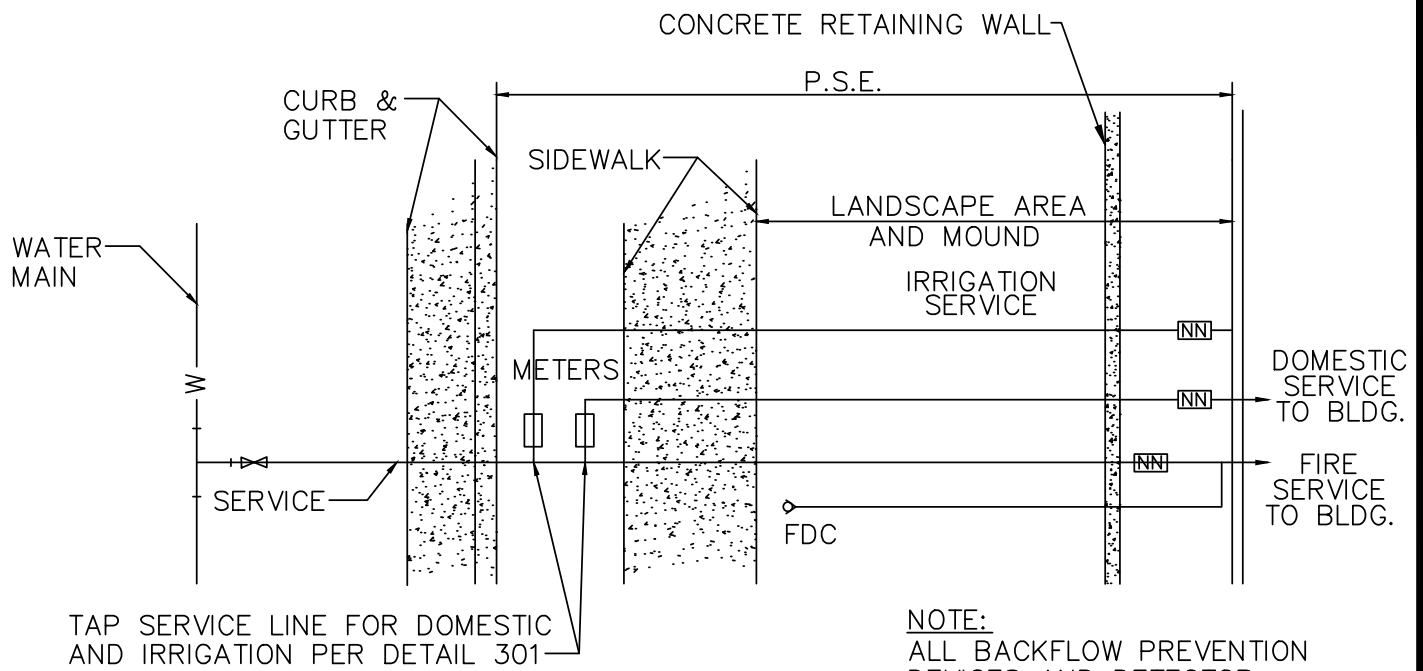
CITY OF PLEASANTON
STANDARD DETAILS

RESIDENTIAL DOMESTIC
WATER SERVICE AND
IRRIGATION SERVICE



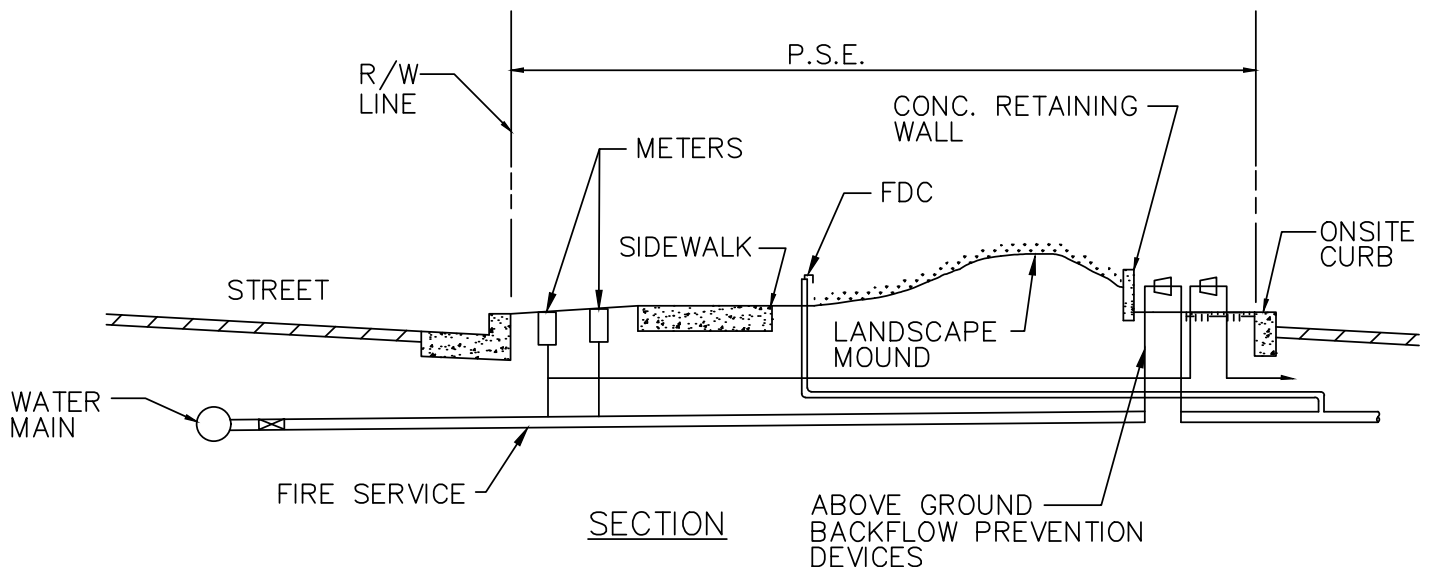
DATE : 7/24 DWG NO. 707

DRAWN BY: STAFF
CHECKED BY: AN
SCALE: N.T.S.



PLAN VIEW

NOTE:
ALL BACKFLOW PREVENTION DEVICES AND DETECTOR CHECKS TO BE ON THE BACKSIDE OF LANDSCAPE BERM, AWAY FROM STREET, WITHIN PUBLIC SERVICE EASEMENT.



SECTION

NOTE:

WHERE DISTANCE FROM METER TO BACKFLOW DEVICE EXCEEDS 12 INCHES, SERVICE LINE FROM METER TO BACKFLOW DEVICE SHALL HAVE A 4 INCH THICK CONCRETE CAP.

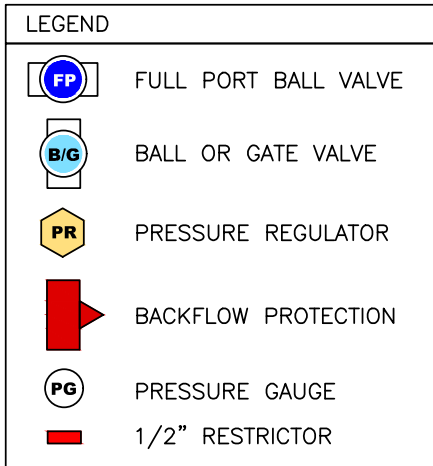
DRAWN BY:	STAFF	
CHECKED BY:	AN	
SCALE:	N.T.S.	

CITY OF PLEASANTON
STANDARD DETAILS

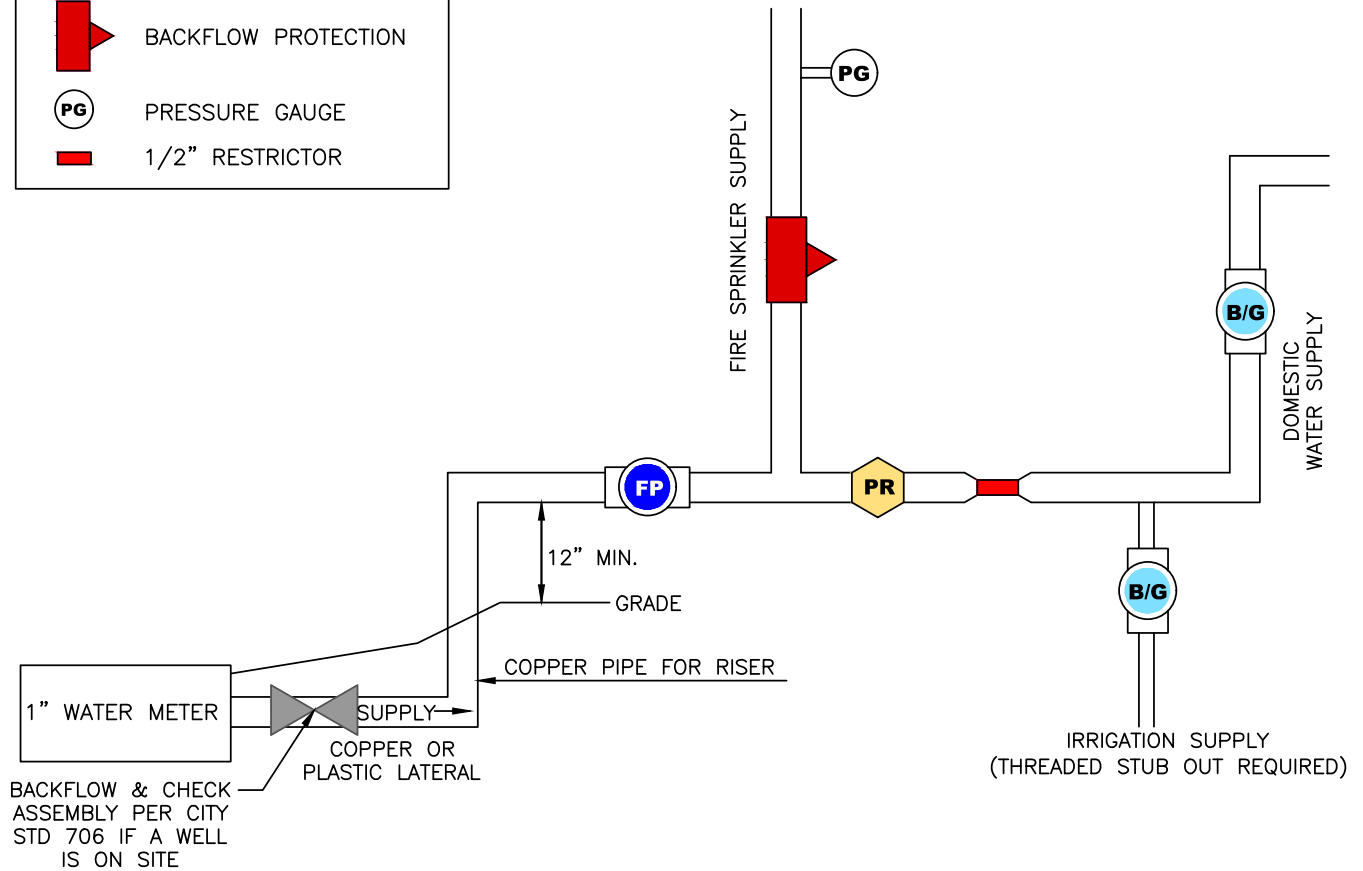
COMMERCIAL AND INDUSTRIAL
FIRE AND WATER SERVICES
BUSINESS PARKS



DATE : 7/24 DWG NO. 708



(HOUSES WITH FIRE SPRINKLERS)



NOTES: ALL PIPING SHALL FOLLOW THIS SEQUENCE

1. 1" WATER METER
2. SUPPLY LINE (SIZED FOR DEMAND)
3. FULL PORT BALL VALVE
4. FIRE SPRINKLER BRANCH
5. PRESSURE REGULATOR (WHEN REQUIRED-80LBSMAX.)
6. 1/2" RESTRICTOR BRANCH
7. IRRIGATION AND HOUSE WITH BALL OR GATE VALVES

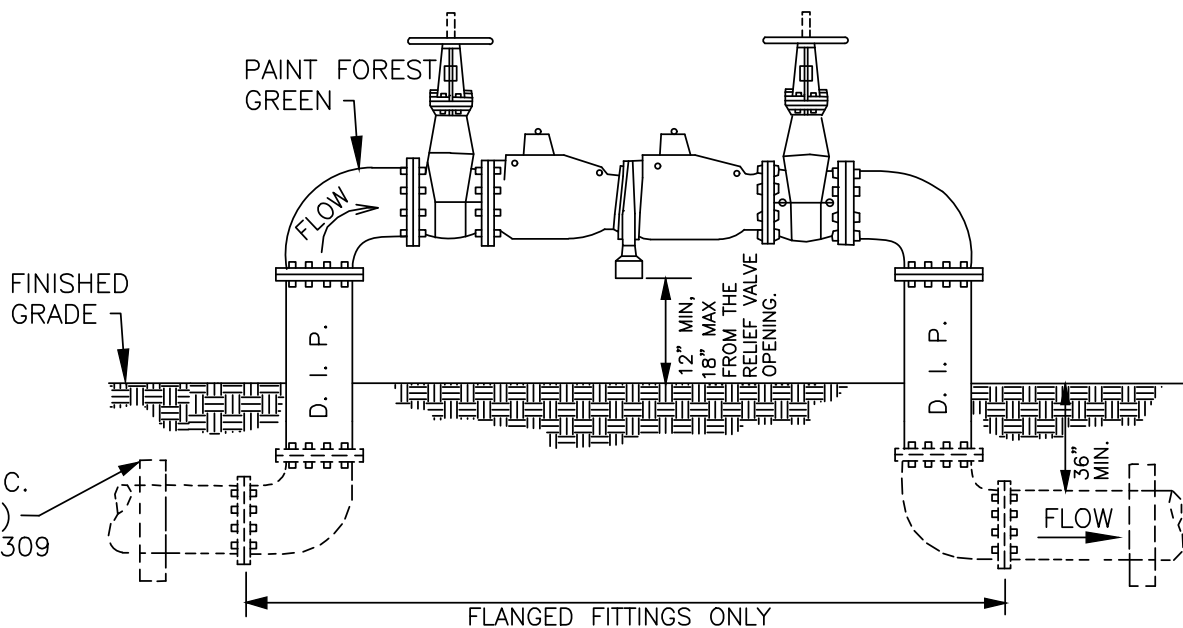
ATTENTION: ONLY FIRE SPRINKLER SUPPLY MAY BE CONNECTED BEFORE 1/2" REDUCER!

DRAWN BY: STAFF		
CHECKED BY: AN		
SCALE: N.T.S.		

CITY OF PLEASANTON STANDARD DETAILS WATER SERVICE RISER REQUIREMENTS



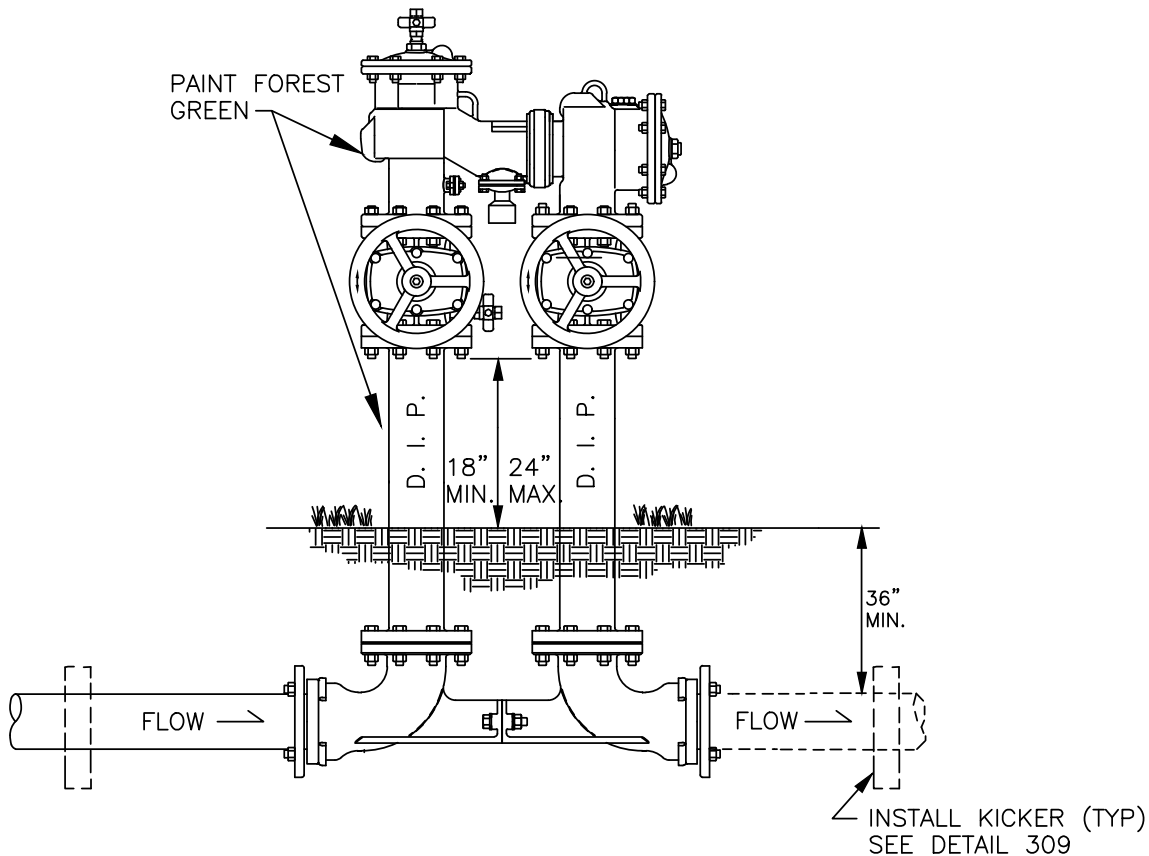
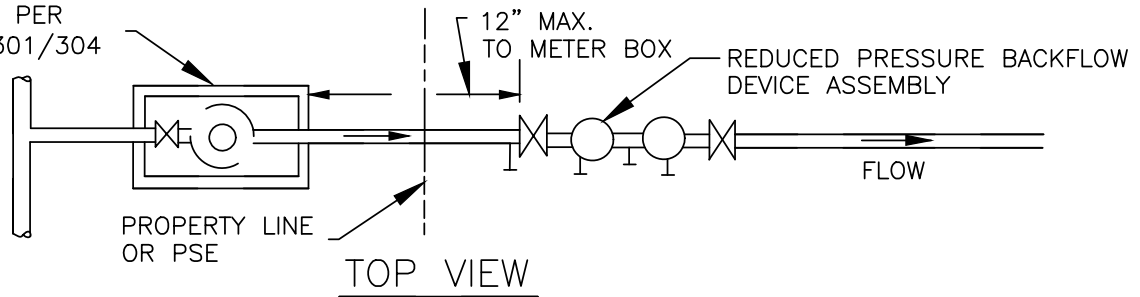
DATE : 7/24 | DWG NO. 709



1. ALL BACKFLOW PREVENTION ASSEMBLIES SHALL BE ON THE USC FCCCHR APPROVED LIST, SEE SPECIFICATIONS 14-02J.
2. THE BOTTOM OF THE RELIEF VALVE ON REDUCED PRESSURE PRINCIPAL ASSEMBLY SHALL BE INSTALLED A MINIMUM OF 12" OR MAXIMUM OF 18" ABOVE FINISHED GRADE.
3. DIP BELOW GROUND SHALL BE ENCASED IN POLYETHYLENE TUBING. SEE SPEC. 14-03B.
4. ALL CONNECTIONS TO BE FLANGED.
5. ALL TRIM HARDWARE TO BE BRASS OR BRONZE.
6. MASTIC ALL BOLTS AND NUTS UNDERGROUND OR USE STAINLESS STEEL COMPONENTS.
7. BACKFLOW PREVENTION ASSEMBLIES SHALL BE TESTED WITHIN 14 DAYS AFTER THE VALVE IN THE STREET IS OPENED.
8. IF MAX. DISTANCE BETWEEN WATER METER BOX AND REDUCED PRESSURE PRINCIPAL ASSEMBLY EXCEEDS 12", A CONCRETE CAP SHALL BE PLACED OVER THE WATER LINE, SEE DET. NO. 114.
9. WEATHER PROTECTION DEVICES TO PROTECT PIPES FROM FREEZING SHALL REQUIRE APPROVAL BY THE PLANNING DIVISION PRIOR TO INSTALLATION. SUCH MATERIAL SHALL BE REPLACED AS THEY BECOME WORN OUT.

DATE : 7/24	DWG NO. 710
-------------	-------------

WATER METER PER
STD. DETAIL 301/304



NOTES:

1. ALL BACKFLOW PREVENTION ASSEMBLIES SHALL BE ON THE USC FCCCHR APPROVED LIST, SEE SPEC. 14-02J.
2. DIP BELOW GROUND SHALL BE ENCASED IN POLYETHYLENE TUBING. SEE SPEC. 14-03B.
3. ALL TRIM HARDWARE TO BE BRASS OR BRONZE.
4. MASTIC ALL BOLTS AND NUTS UNDERGROUND OR USE STAINLESS STEEL COMPONENTS.
5. BACKFLOW PREVENTION ASSEMBLIES SHALL BE TESTED WITHIN 14 DAYS AFTER THE VALVE IN THE STREET IS OPENED.
6. IF MAX. DISTANCE BETWEEN WATER METER BOX AND REDUCED PRESSURE PRINCIPAL ASSEMBLY EXCEEDS 12", A CONCRETE CAP SHALL BE PLACED OVER THE WATER LINE, SEE DETAIL NO. 114.
7. WEATHER PROTECTION DEVICES TO PROTECT PIPES FROM FREEZING SHALL REQUIRE APPROVAL BY THE PLANNING DIVISION PRIOR TO INSTALLATION. SUCH MATERIAL SHALL BE REPLACED AS THEY BECOME WORN OUT.

CITY OF PLEASANTON
STANDARD DETAILS

BACK FLOW PREVENTER
COMPACT INSTALLATION
FOR 3" & LARGER

DRAWN BY: STAFF
CHECKED BY: AN
SCALE: N.T.S.



DATE : 7/24 DWG NO. 711