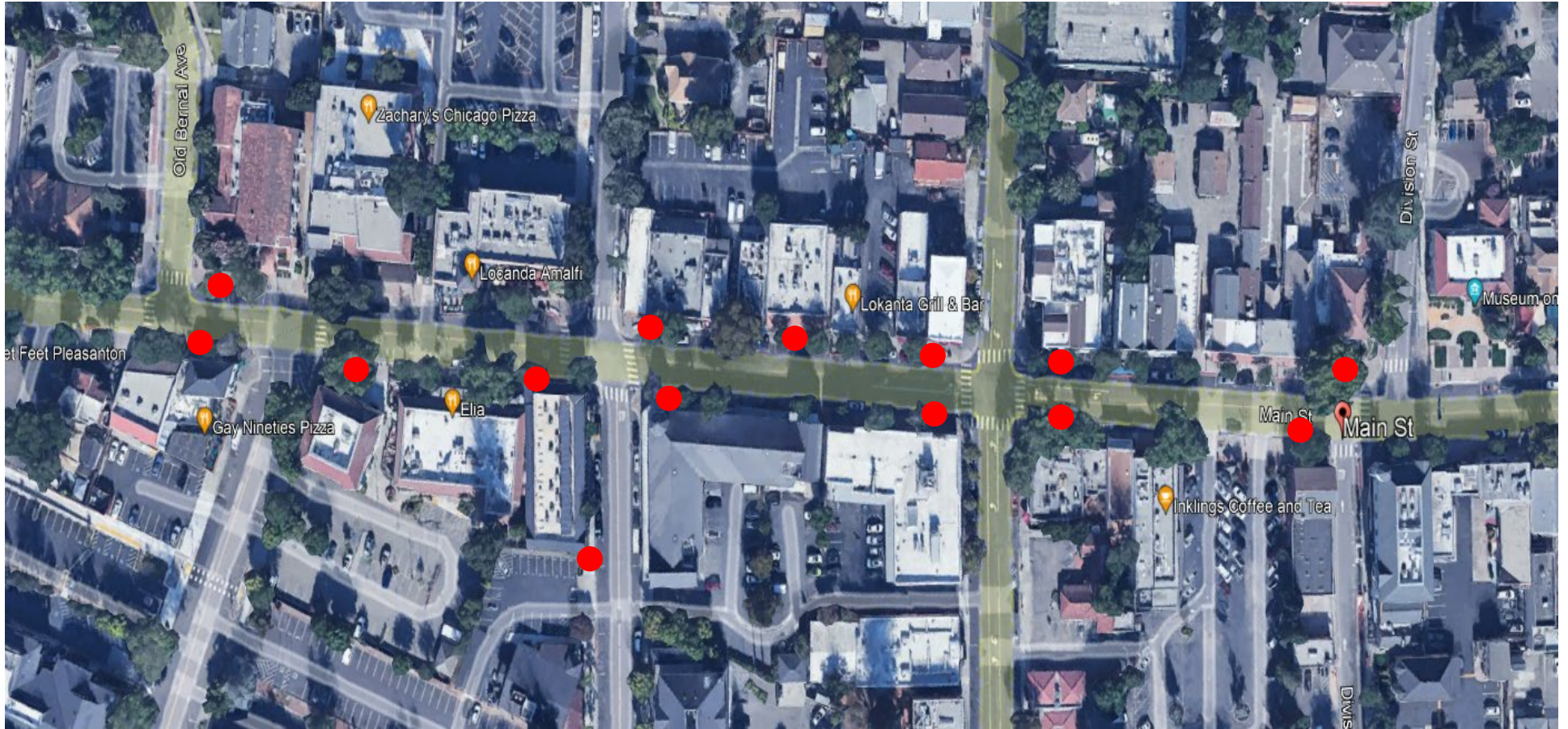


Main Street – Arroyo del Valle Bridge to Division Street

16 Trash Cans



Main Street – Division Street to Old Bernal Ave.
14 Trash Cans



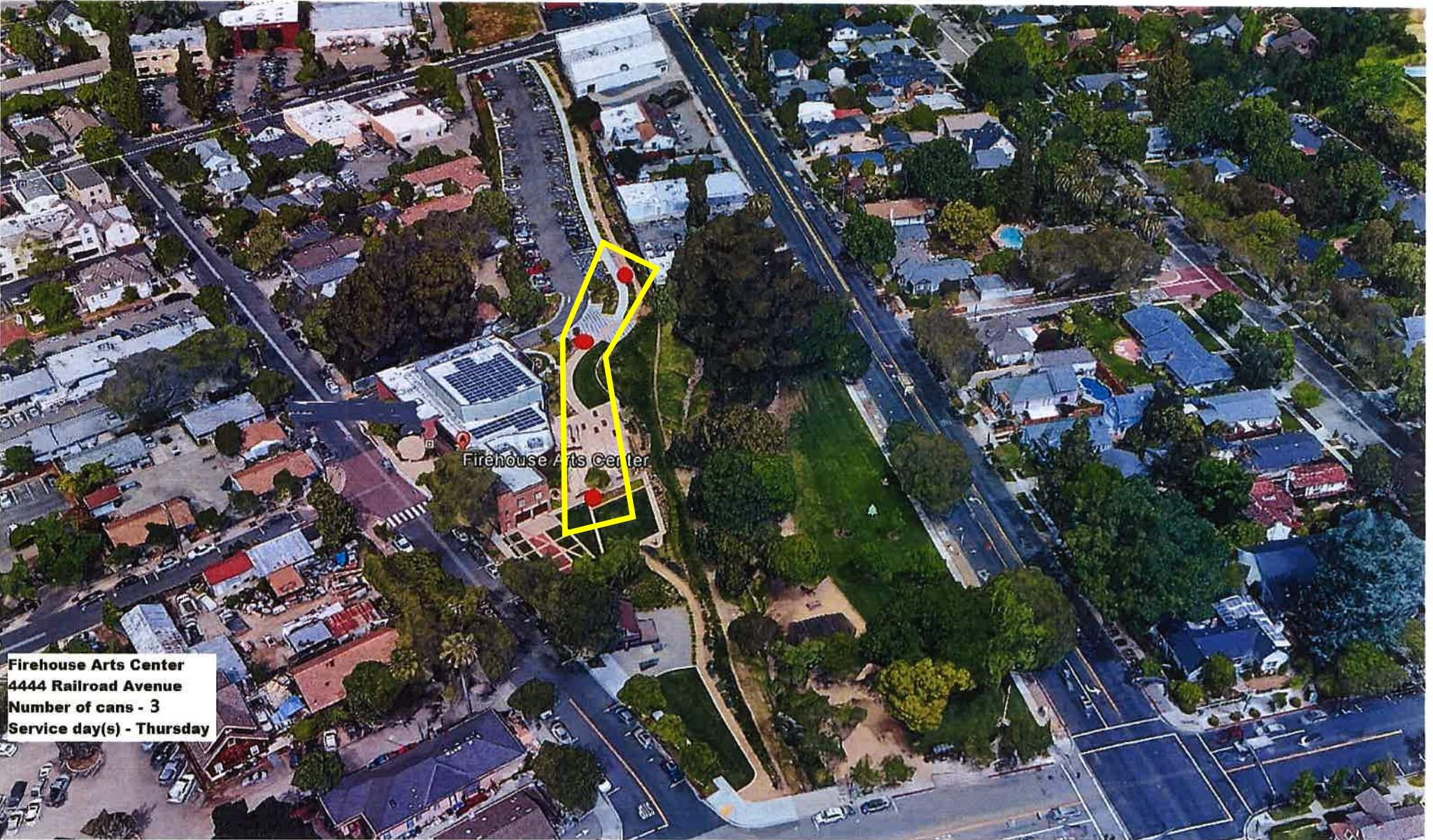
Main Street – Old Bernal Ave. to Bernal Ave.
4 Trash Cans



Delucchi Park
4501 First Street
Number of cans - 3
Service day(s) - Monday
& Friday

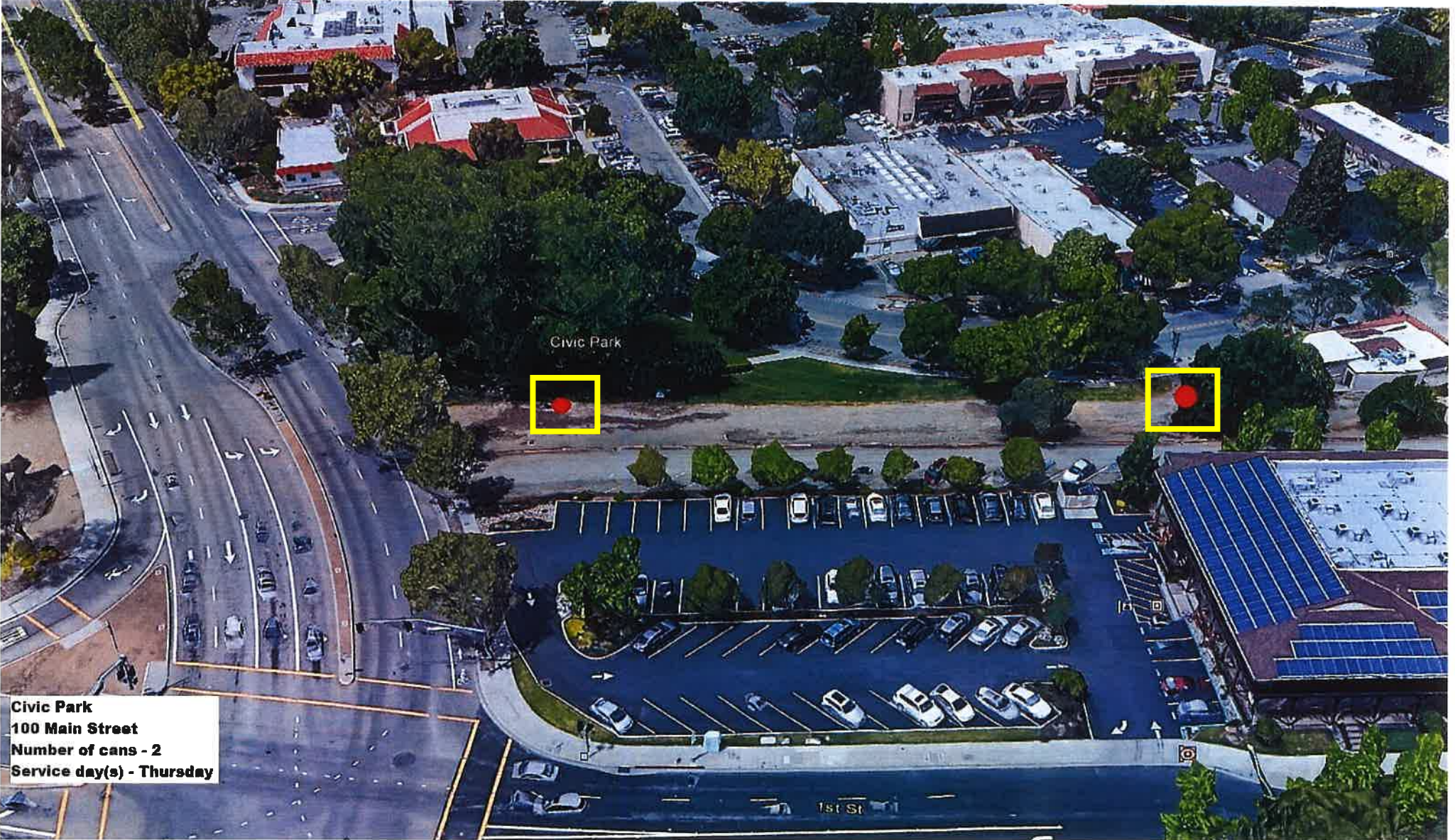


Lions Wayside Park
4401 First Street
Number of cans - 5
Service day(s) - Monday
& Friday.



Firehouse Arts Center

Firehouse Arts Center
4444 Railroad Avenue
Number of cans - 3
Service day(s) - Thursday



Civic Park
100 Main Street
Number of cans - 2
Service day(s) - Thursday



Veteran's Plaza Park
550 Peters Street
Number of cans - 4
Service day(s) - Thursday

Peters Ave

Veterans Plaza Park

KEN MERCER SPORTS PARK

Sports Park - Phase 4 and Softball Complex
See following pages for expanded detail

Sports Park - Phase 1
See following pages for expanded detail

Sports Park - Phase 2
See following pages for expanded detail

Sports Park - Phase 3
See following pages for expanded detail

Sports Park - Phase 5
See following pages for expanded detail

Phase 4 and Softball Complex

Phase 1

Phase 2

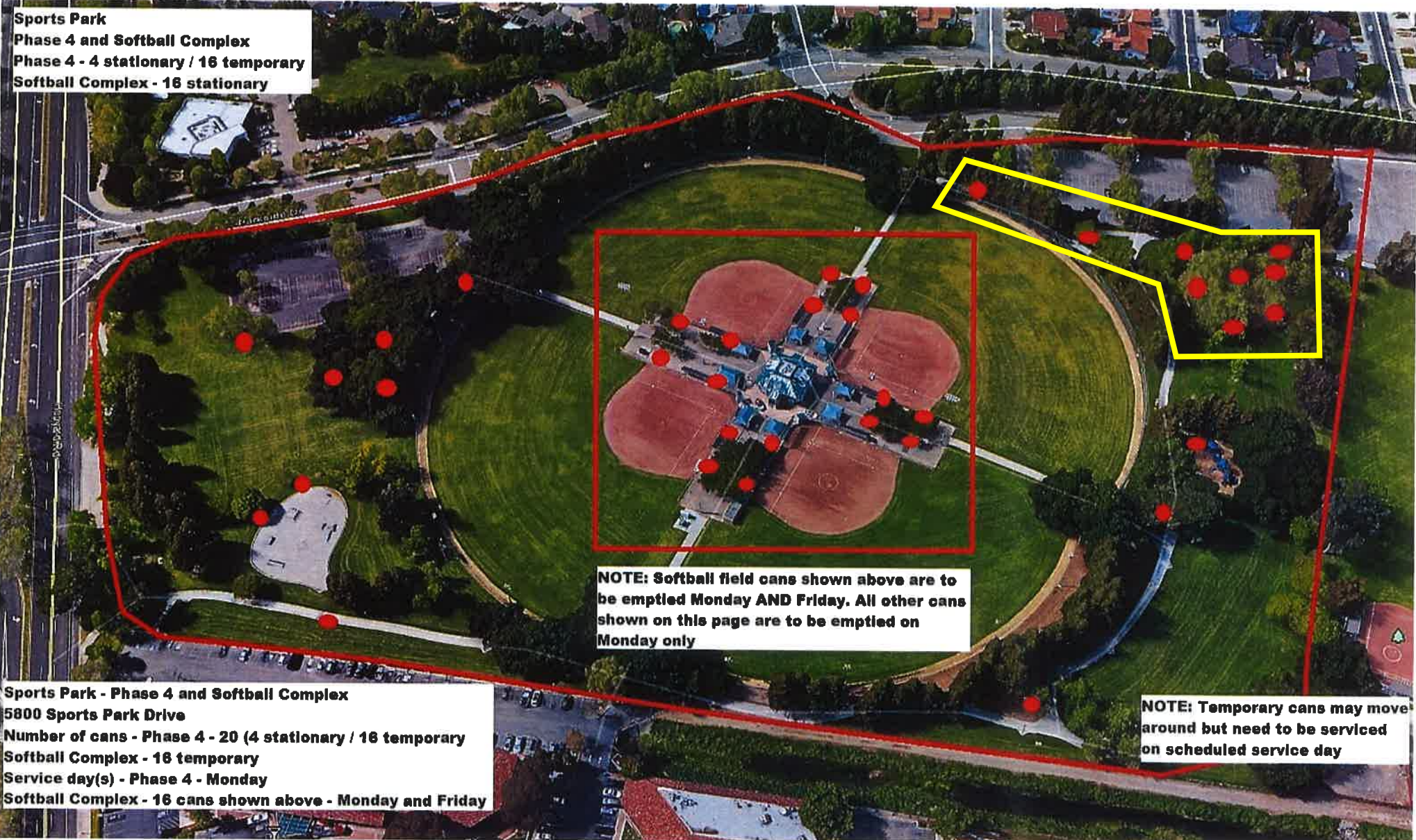
Phase 3

Phase 5

NOTE: This park contains numerous cans that are temporary and may move around. All temporary cans are to be serviced on the scheduled service day



Sports Park
Phase 4 and Softball Complex
Phase 4 - 4 stationary / 16 temporary
Softball Complex - 16 stationary



NOTE: Softball field cans shown above are to be emptied Monday AND Friday. All other cans shown on this page are to be emptied on Monday only

Sports Park - Phase 4 and Softball Complex
5800 Sports Park Drive
Number of cans - Phase 4 - 20 (4 stationary / 16 temporary)
Softball Complex - 16 temporary
Service day(s) - Phase 4 - Monday
Softball Complex - 16 cans shown above - Monday and Friday

NOTE: Temporary cans may move around but need to be serviced on scheduled service day

**Sports Park
Phase 1
4 stationary cans
11 temporary cans**

**Sports Park - Phase 1
5800 Sports Park Drive
Number of cans - 15 cans total
(4 stationary / 11 temporary)
Service day(s) - Monday and Friday**

**NOTE: Temporary cans may move
around but need to be serviced on
scheduled service day**



**Sports Park
Phase 2
1 stationary can
10 temporary cans**



**Sports Park - Phase 2
5800 Sports Park Drive
Number of cans - 11 (1 stationary / 10 temporary
Service day(s) - Monday**

**NOTE: Temporary cans may
move around but need to be
serviced on scheduled
service day**

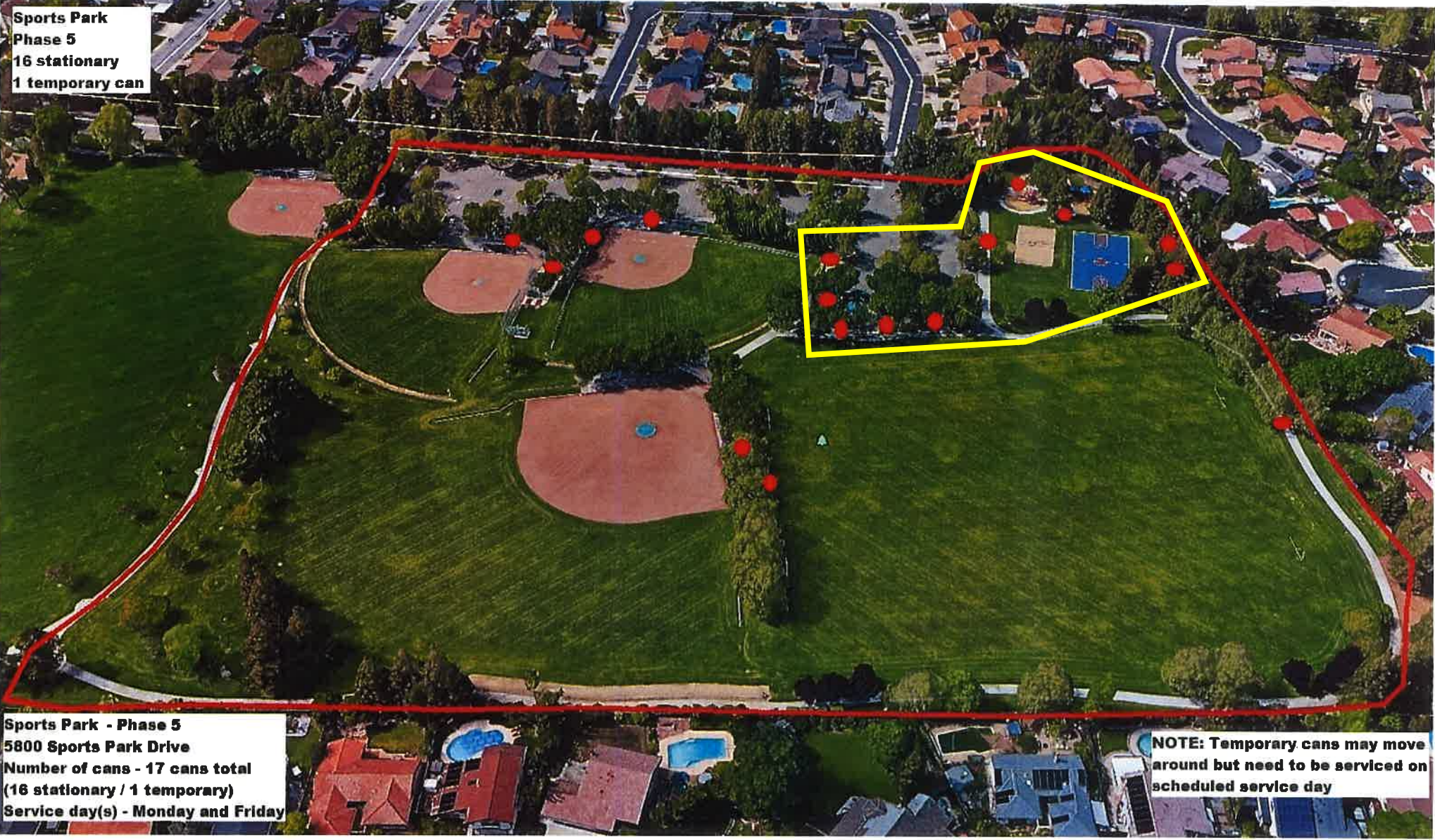
**Sports Park
Phase 3
5 stationary cans
25 temporary cans**



NOTE: Temporary cans may move around but need to be serviced on scheduled service day

**Sports Park Phase 3
Number of cans - 30 total (5 stationary / 25 temporary) Service day(s) - Monday**

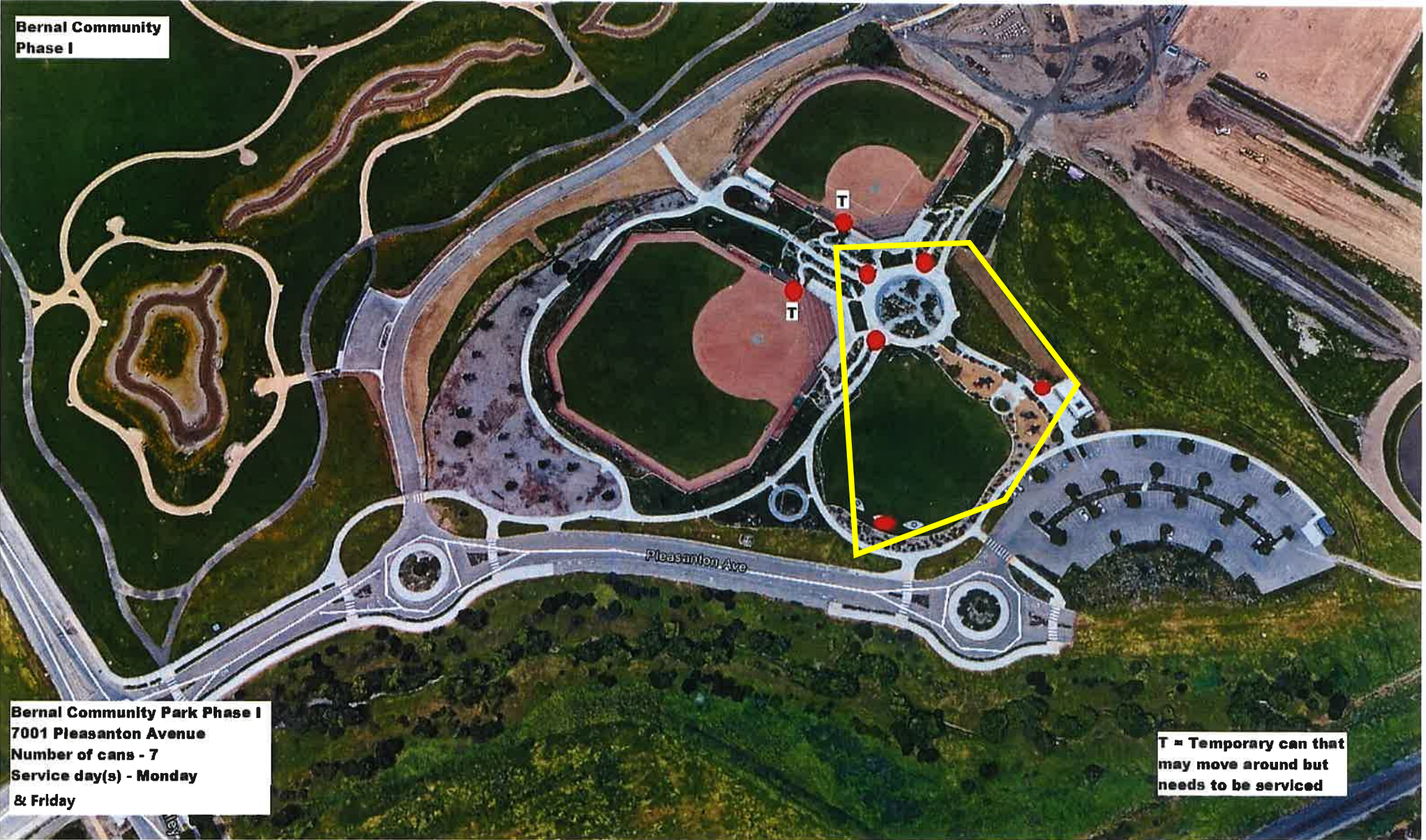
**Sports Park
Phase 5
16 stationary
1 temporary can**



**Sports Park - Phase 5
5800 Sports Park Drive
Number of cans - 17 cans total
(16 stationary / 1 temporary)
Service day(s) - Monday and Friday**

**NOTE: Temporary cans may move
around but need to be serviced on
scheduled service day**

**Bernal Community
Phase I**



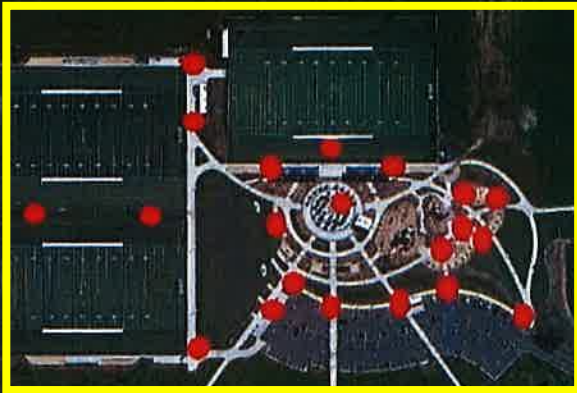
Bernal Community Park Phase I
7001 Pleasanton Avenue
Number of cans - 7
Service day(s) - Monday
& Friday

**T = Temporary can that
may move around but
needs to be serviced**

**Bernal Community
Phase II**

4/20/18

Bernal Ave



Bernal Community Park



**Bernal Community Park -
Phase II**
7001 Pleasanton Avenue
Number of cans - 26
Service day(s) - Monday
& Friday

oad 8

Cotton Mill Way

Oak Vista Way

Whispering Oak Way

Valley Way



Pleasanton Tennis & Community Park
5801 Valley Avenue
Number of cans - 27
(18 stationary / 9 temporary)
Service day(s) - Tuesday and Friday

NOTE: Temporary cans may move around but need to be serviced on scheduled service day

VAL VISTA COMMUNITY PARK

Park is divided into three sections for trash collection. Please refer to following pages for locations and schedule

Val Vista Park - Section 1
See following pages for expanded detail

Val Vista Park - Section 2
See following pages for expanded detail



Val Vista Park - Section 3
See following pages for expanded detail



Val Vista - Section 1



**Val Vista Community Park
Section 1
7350 Johnson Drive
Number of cans - 7
Service day(s) - Tuesday and Friday**

**T = Temporary can that
may be moved around but
still needs to be serviced**



Val Vista - Section 2

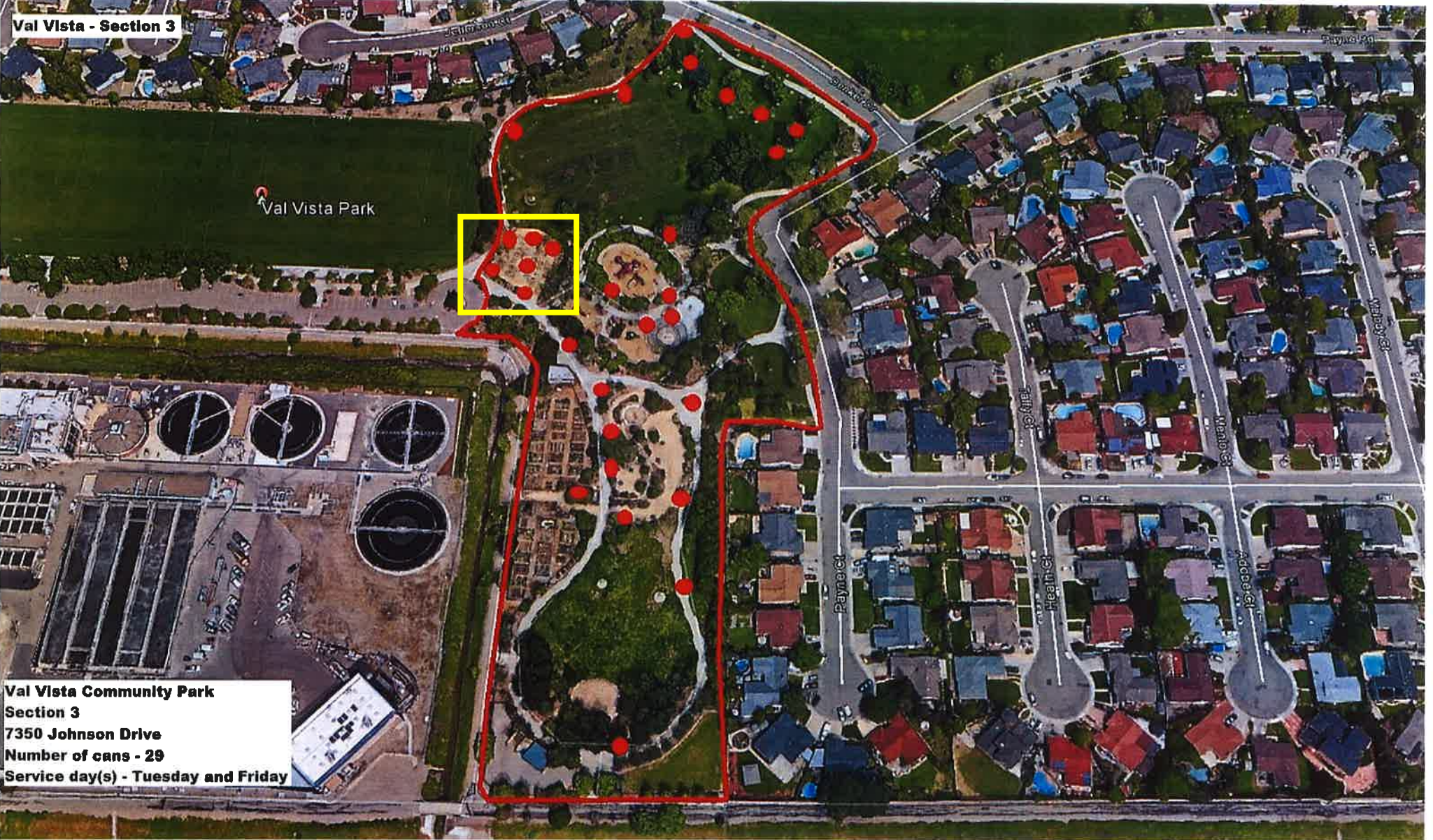
**Val Vista Community Park
Section 2
7350 Johnson Drive
Number of cans - 15
Service day(s) - Tuesday and Friday**

**T = Temporary can that may
be moved but still needs to
be serviced**

Val Vista - Section 3

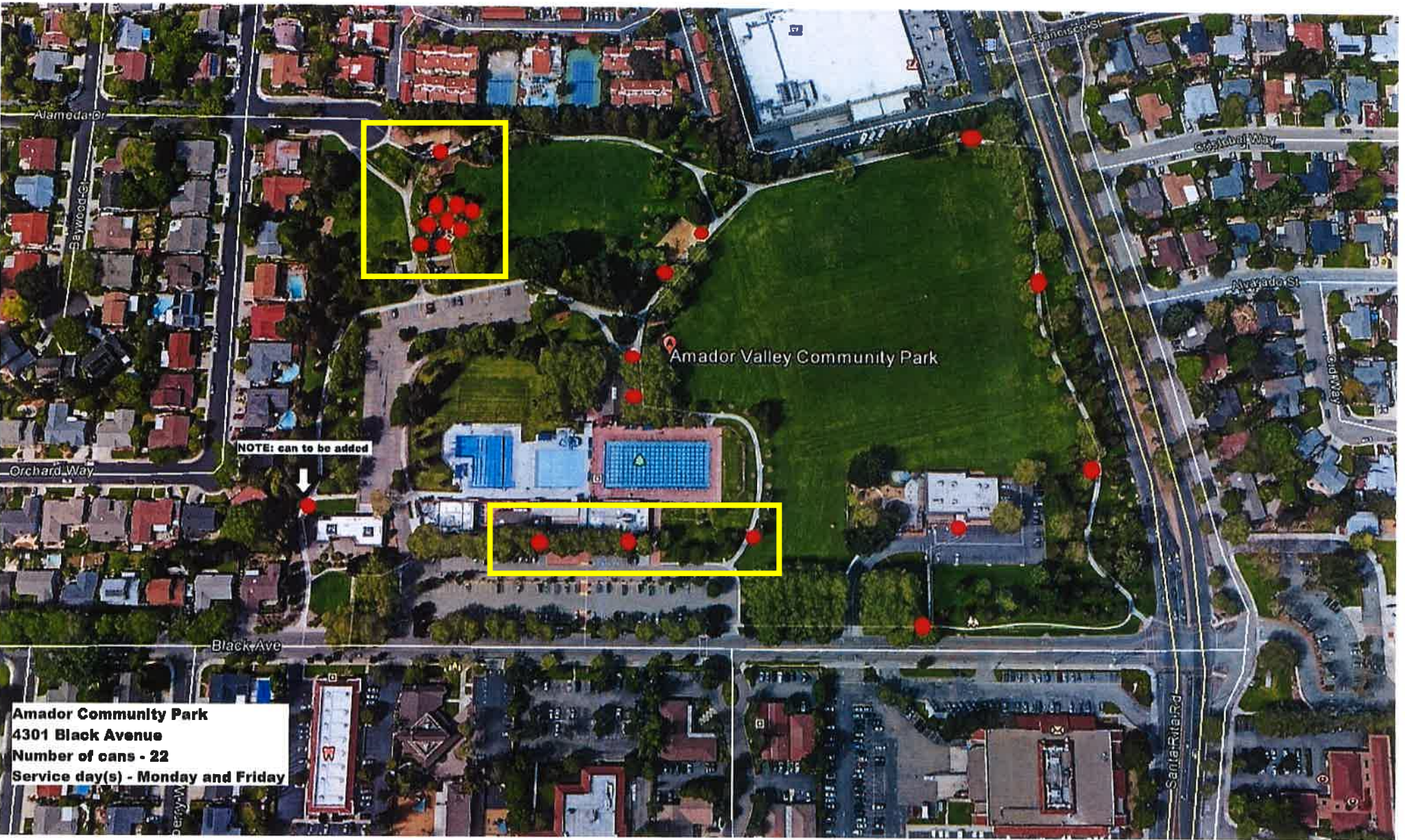
Val Vista Park

**Val Vista Community Park
Section 3
7350 Johnson Drive
Number of cans - 29
Service day(s) - Tuesday and Friday**



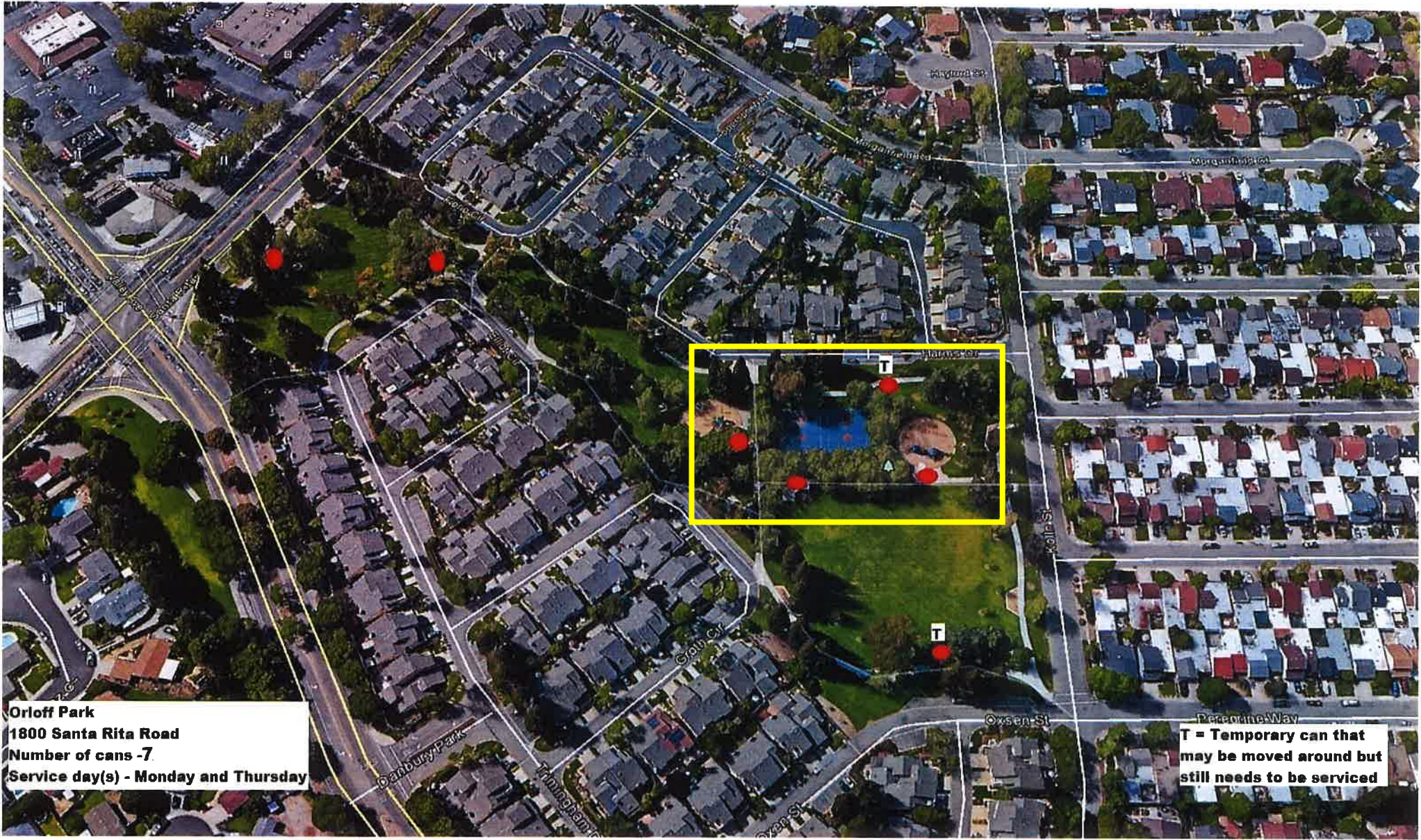


Moller Park
5500 Pleasant Hill Road
Number of cans - 8
Service day(s) - Tuesday
& Friday



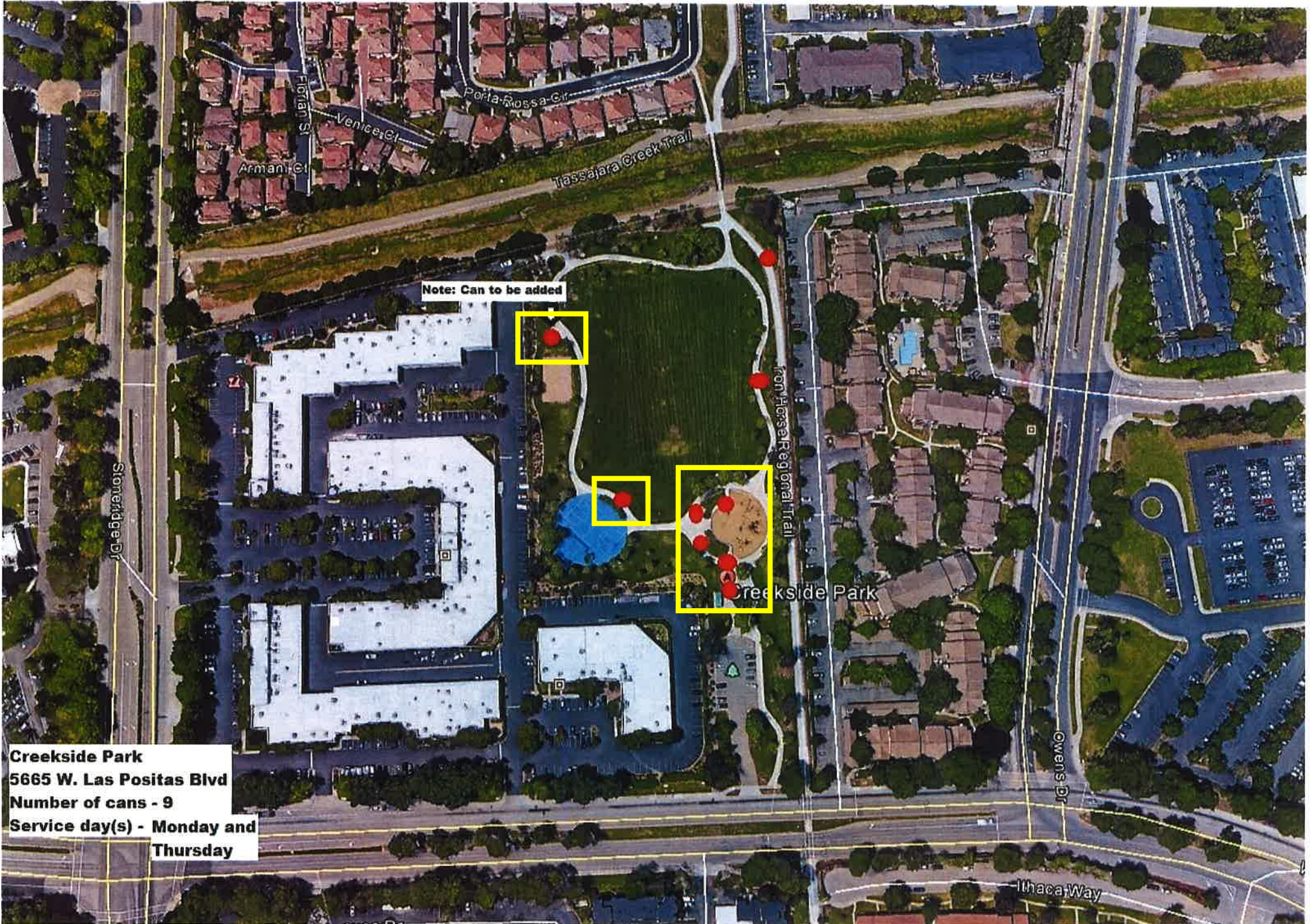
NOTE: can be added

Amador Community Park
4301 Black Avenue
Number of cans - 22
Service day(s) - Monday and Friday



Orloff Park
1800 Santa Rita Road
Number of cans -7
Service day(s) - Monday and Thursday

**T = Temporary can that
may be moved around but
still needs to be serviced**



Creekside Park
5665 W. Las Positas Blvd
Number of cans - 9
Service day(s) - Monday and Thursday

Note: Can to be added

Creekside Park

Stoneledge Dr

Owens Dr

Ithaca Way

Iron Horse Regional Trail

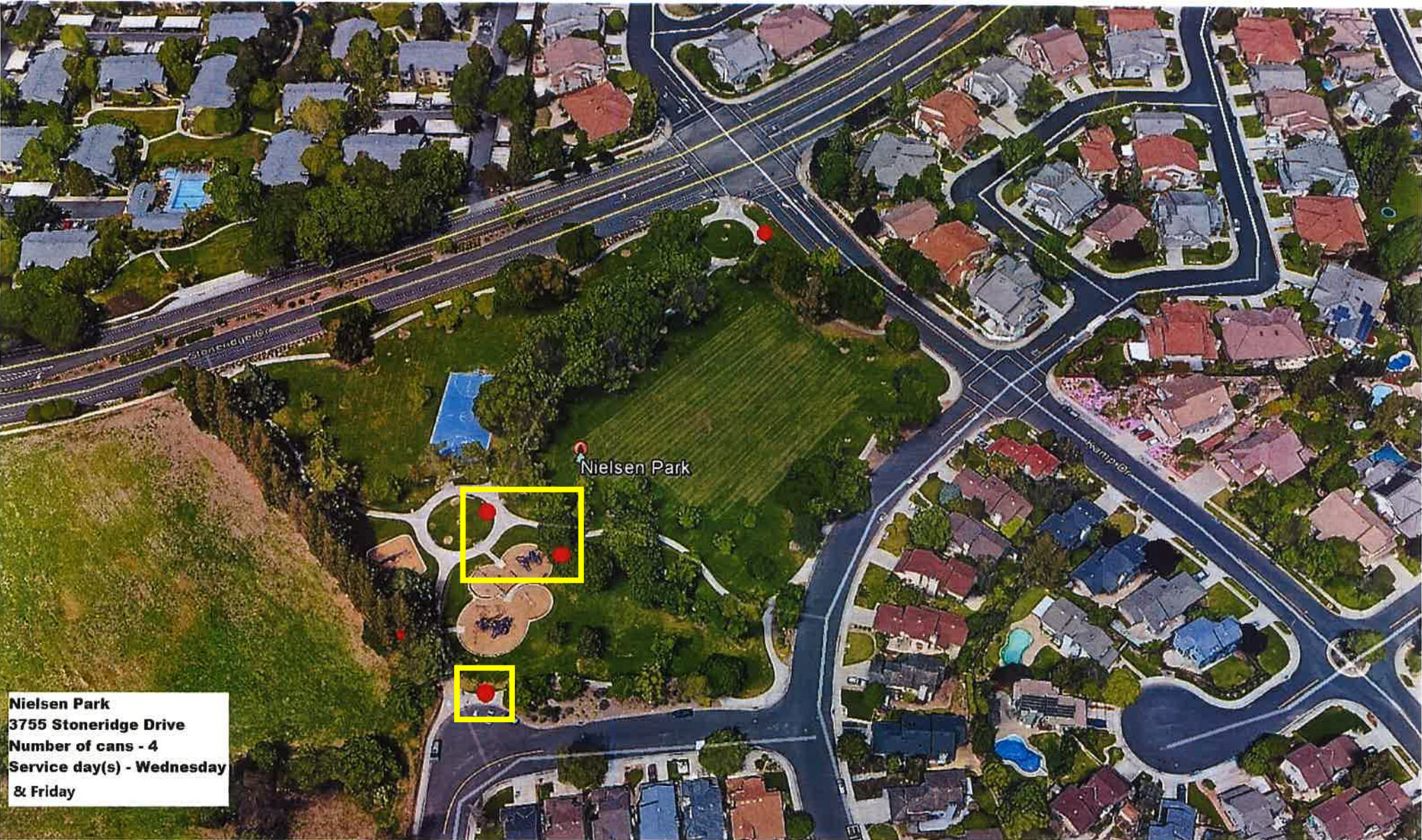
Tassajara Creek Trail

Armani Ct

Venice Ct

Porta-Rossa Ct

Florida St



Nielsen Park
3755 Stoneridge Drive
Number of cans - 4
Service day(s) - Wednesday
& Friday



Mission Hills Park
600 Junipero Street
Number of cans - 10
Service day(s) - Tuesday and Friday