



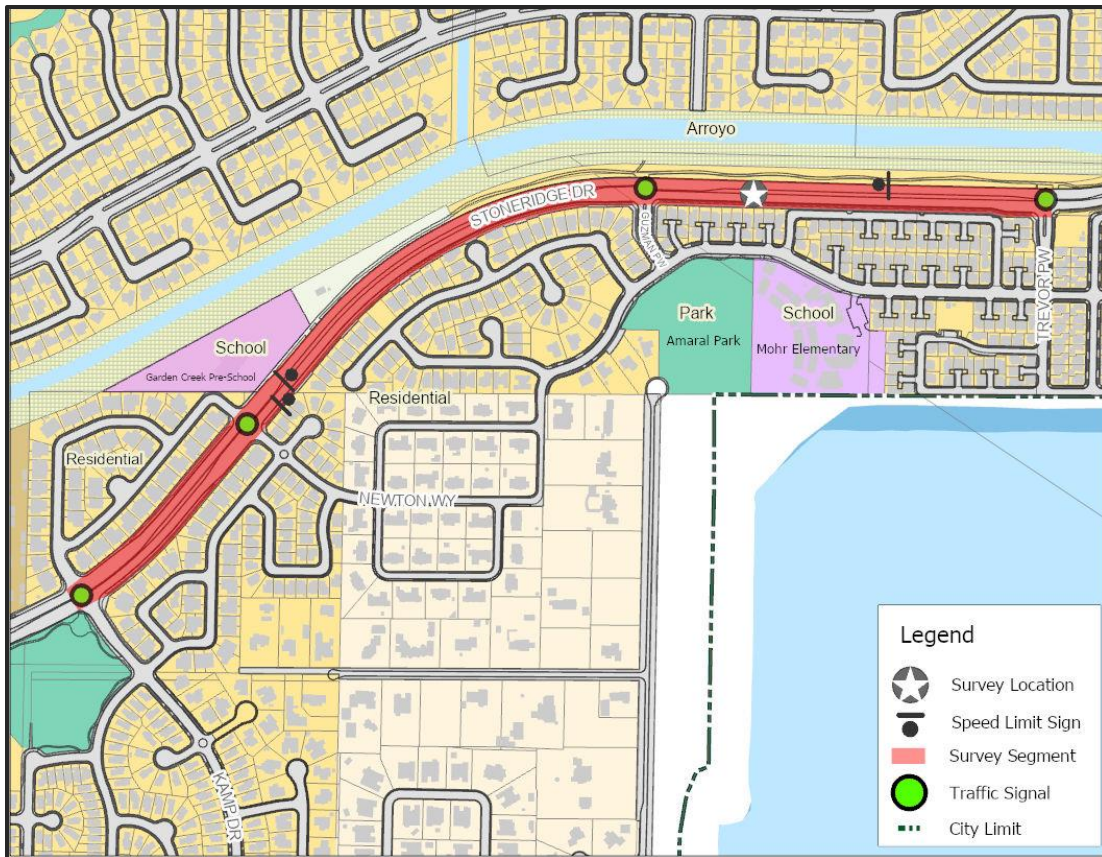
**Engineering and Traffic Survey
Speed Zoning**

**Stoneridge Drive (from Kamp Way to Trevor Parkway)
October 2019**

1. Posted Speed- The posted speed limit for this segment is 40 mph.

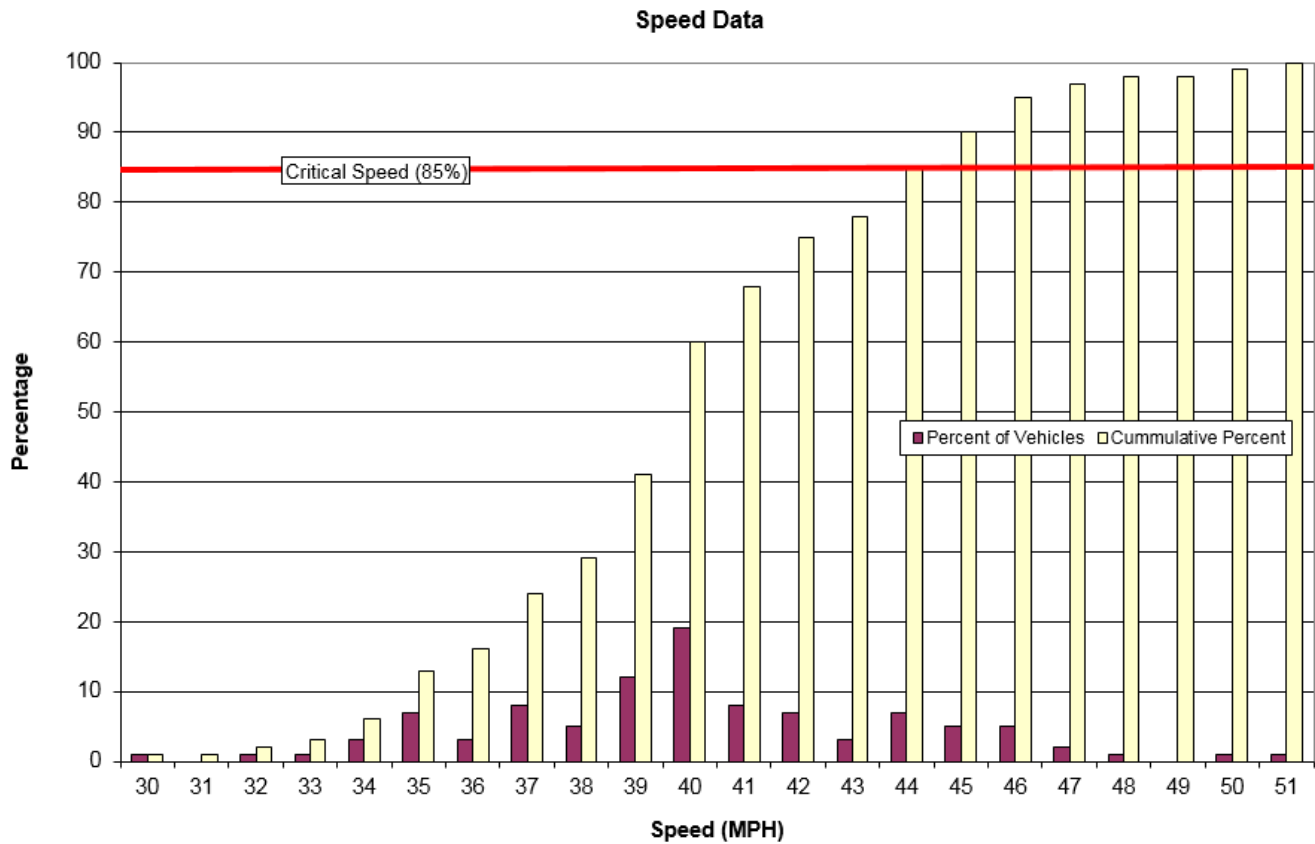
2. Physical Conditions- The length of this segment is 4,500 ft. (0.85 mile). This section of Stoneridge Drive consists of four lanes divided by a raised concrete median. Land use is residential on the entire south side (separated by a sound wall). Land use on the north side is mostly a landscaped, elevated sidewalk with the arroyo approximately 100 feet from the roadway separated by a steel fence. There is a small segment at the western end where there is a private school and residential. Parking is not permitted on either side of the roadway but there are bike lanes available for emergency parking. The alignment of this roadway is level with a slight horizontal curve at the midpoint of the segment.

There are four signalized cross streets in this segment: Kamp Drive, Newton Way, Guzman Parkway and Trevor Parkway. Sidewalks and bike lanes are provided on both sides of the roadway with crosswalks at each signalized intersection.



3. Prevailing Speed- Speed measurements were taken 1,250 feet west of Trevor Parkway on October 8, 2019 in accordance with standard practices with the following results:

Critical Speed	44	10 mph Pace	35-44
Median Speed	40	Percent in Pace	79%



4. Traffic Volumes- The ADT for this segment is 13,000 vehicles.

5. Collision Records- Collision records were checked from January 2017 to December 2018. A total of zero collisions were recorded during this two year period. The collision rate for this roadway segment is 0.00 collisions per million vehicle miles compared to a rate of 1.03 for comparable Pleasanton streets.

6. Highway, Traffic and Road Conditions that are not readily Apparent to the Driver- There are marked school crosswalks at the intersections of Newton Way and Guzman Parkway. Quarry Lane School fronts Stoneridge Drive at the intersection of Newton Way/Stone Pointe Way.

7. Recommendations- The recommended speed limit for this segment is 40 mph. This rounding down is permitted per CVC 21400(B).

I certify that the attached is a true and correct copy of the original document on file at the Community Development Department in Pleasanton, CA

By Mike Tassano Date 02/18/2020